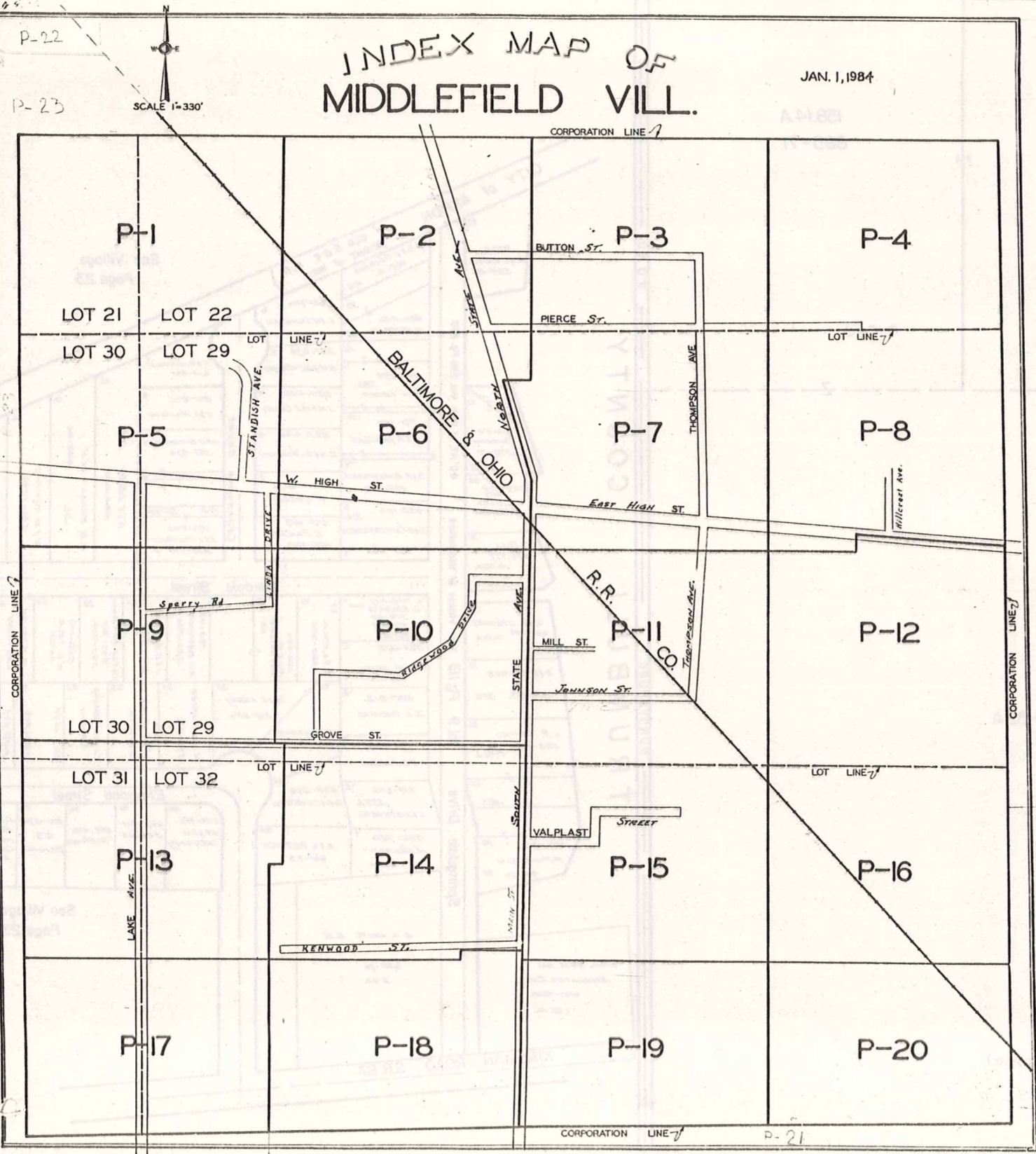
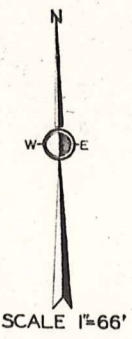
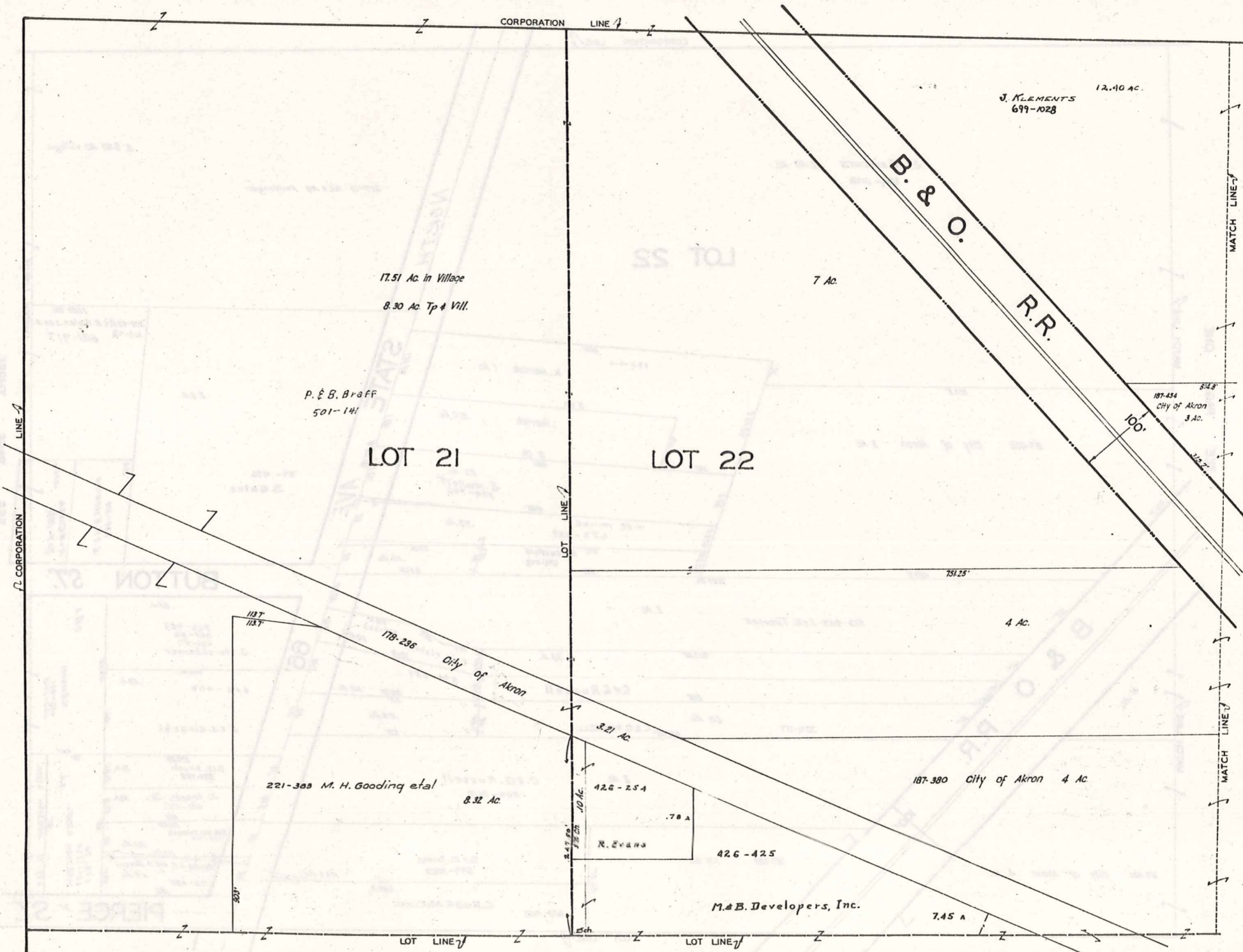


INDEX MAP OF MIDDLEFIELD VILL.

JAN. 1, 1984



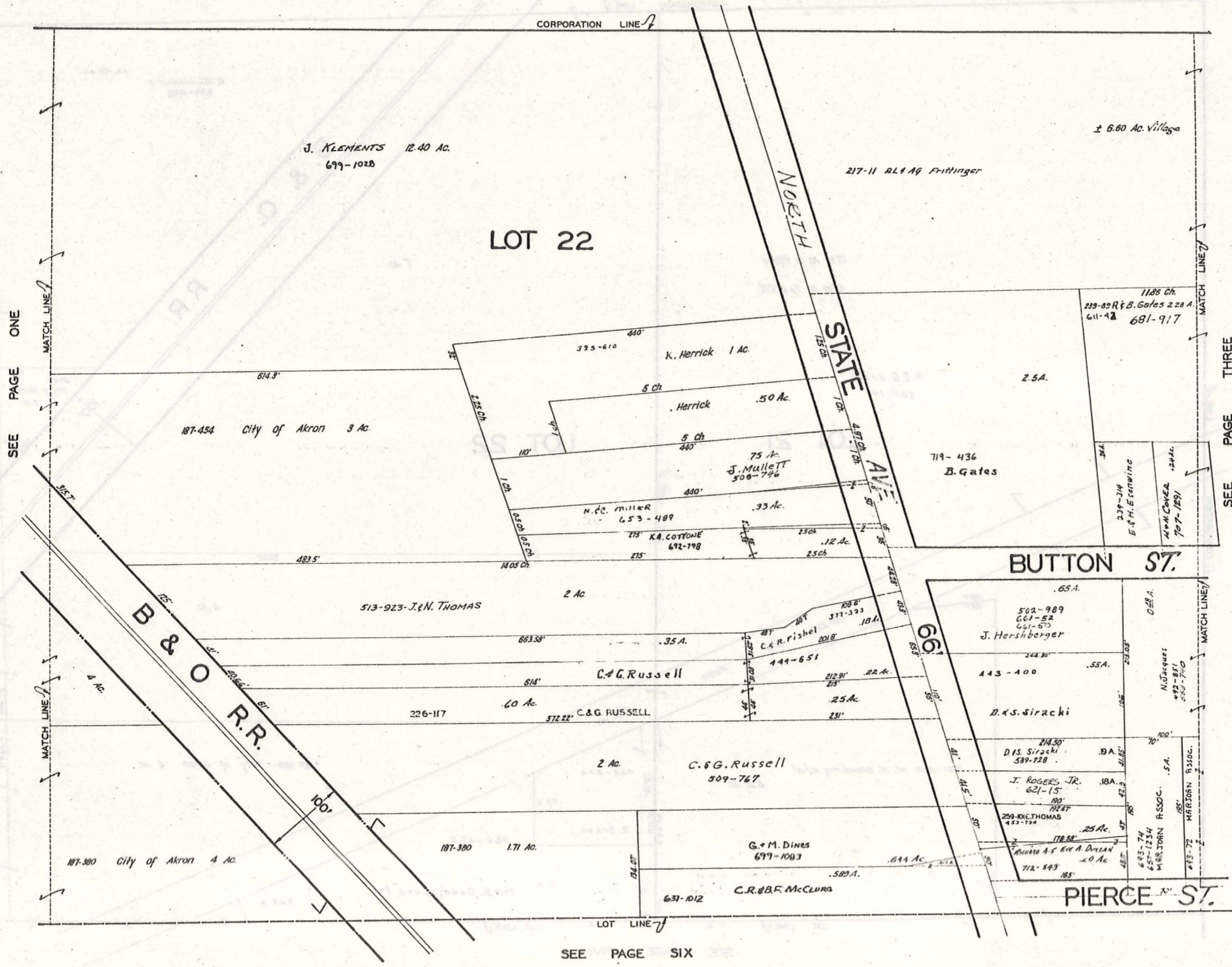
A	B	C
D	E	F
G	H	I
J	K	L
M	N	O
P	Q	R



SEE PAGE TWO

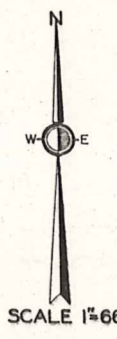
JAN. 1, 1954

SEE PAGE FIVE



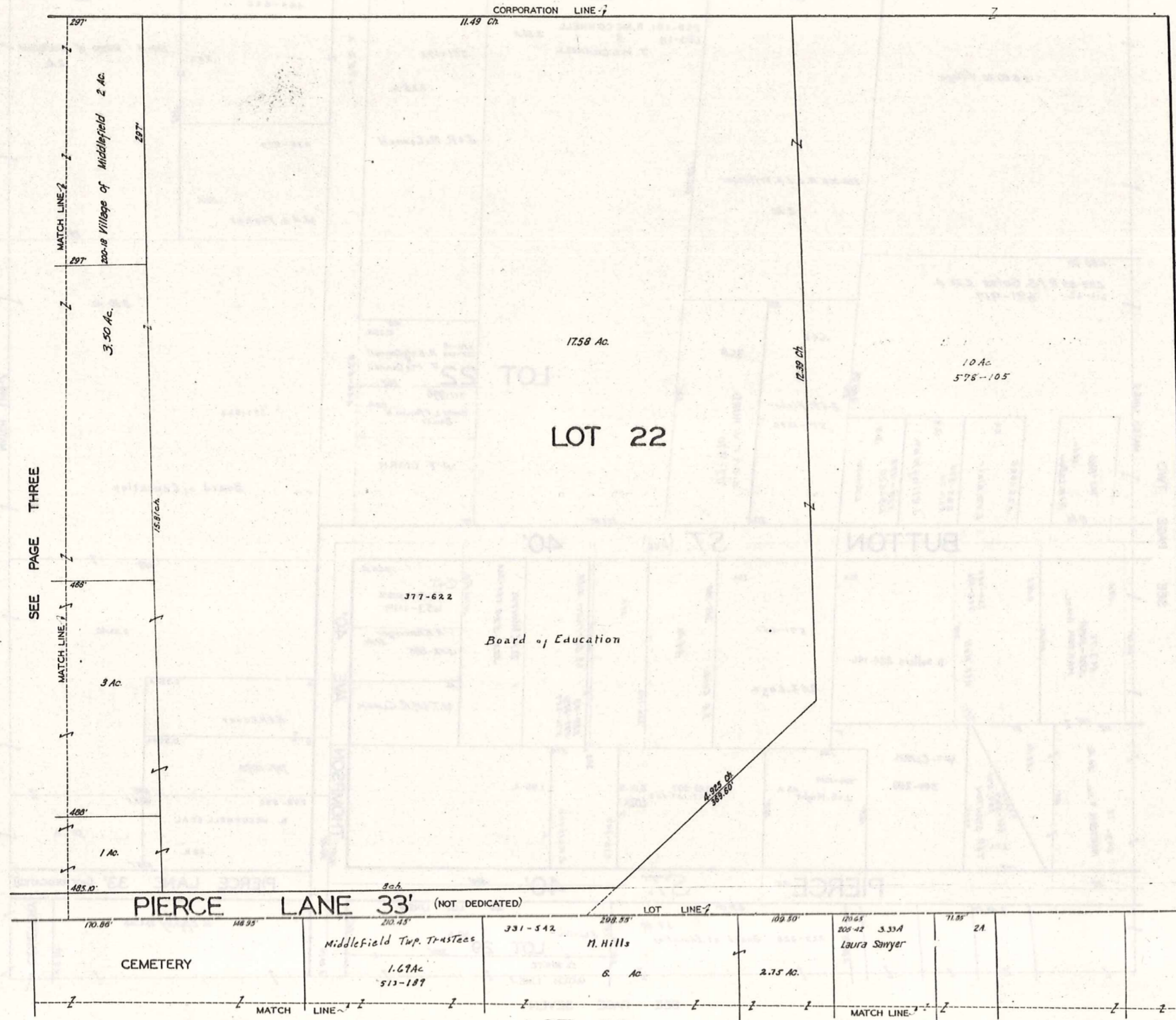
SEE PAGE ONE

SEE PAGE THREE

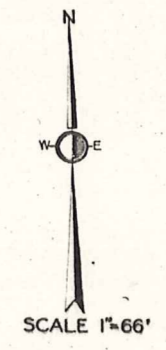


JAN 1, 1984

SEE PAGE SIX



SEE PAGE THREE



JAN .1, 1984

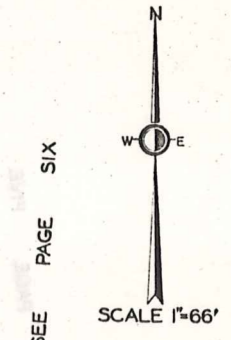
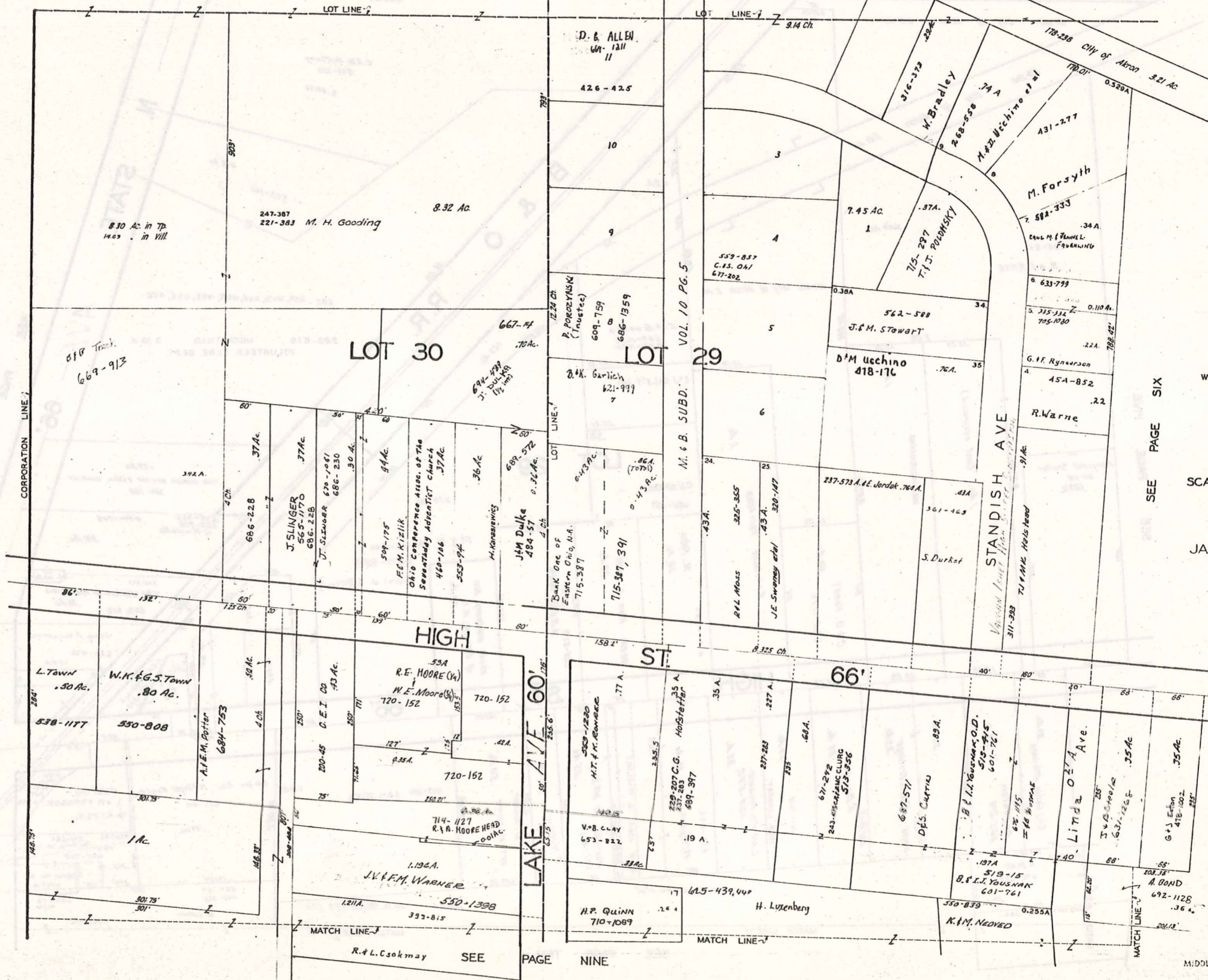
LOT 29

SEE PAGE EIGHT

MIDDLEFIELD VILLAGE PG. 4

MIDDLEFIELD VILLAGE

SEE PAGE ONE



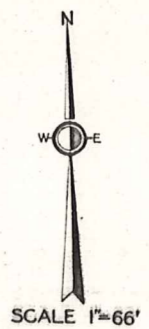
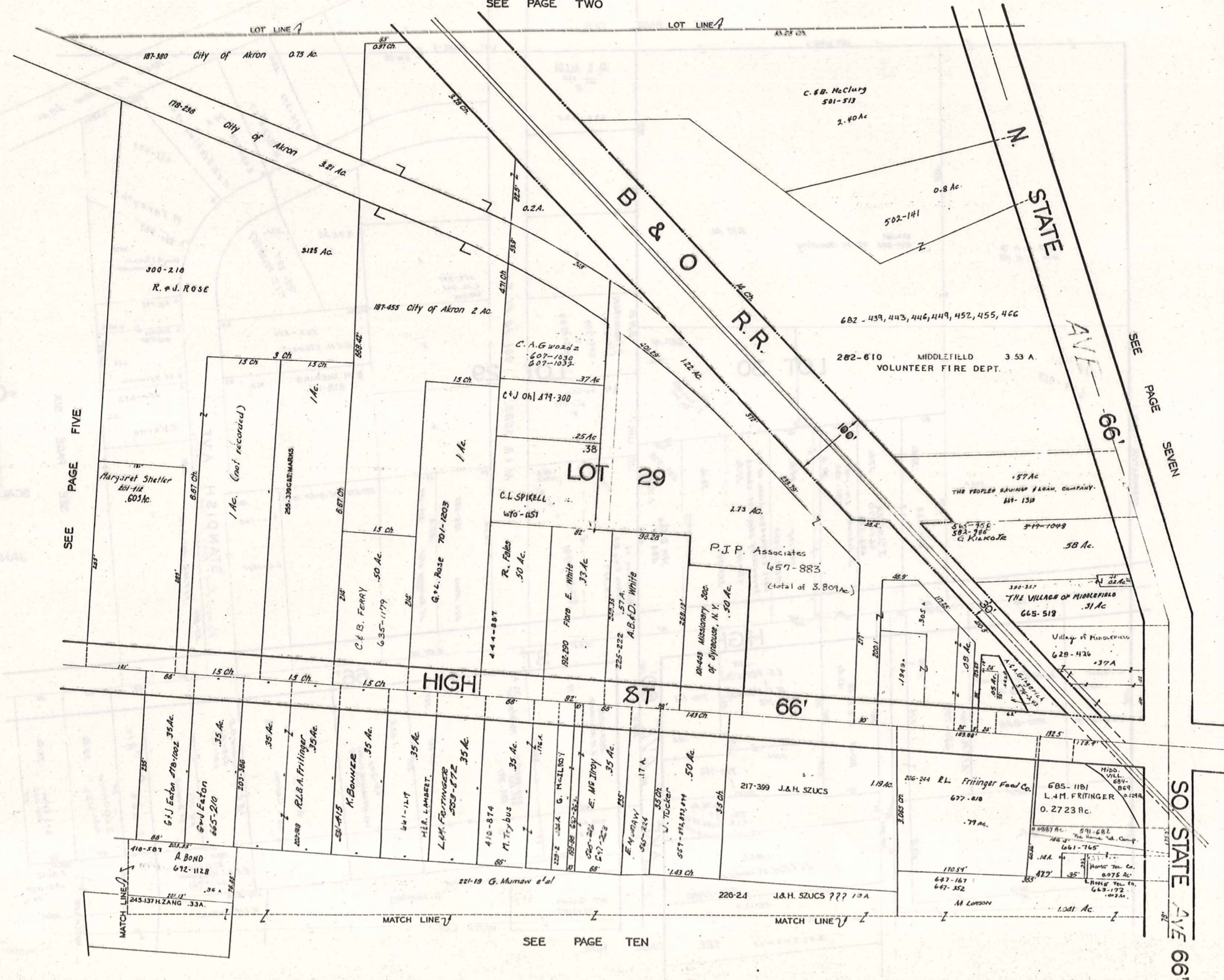
SEE PAGE SIX

JAN. 1, 1987

279

MIDDLEFIELD VILLAGE

SEE PAGE TWO



SCALE 1"=66'

JAN. 1, 1984

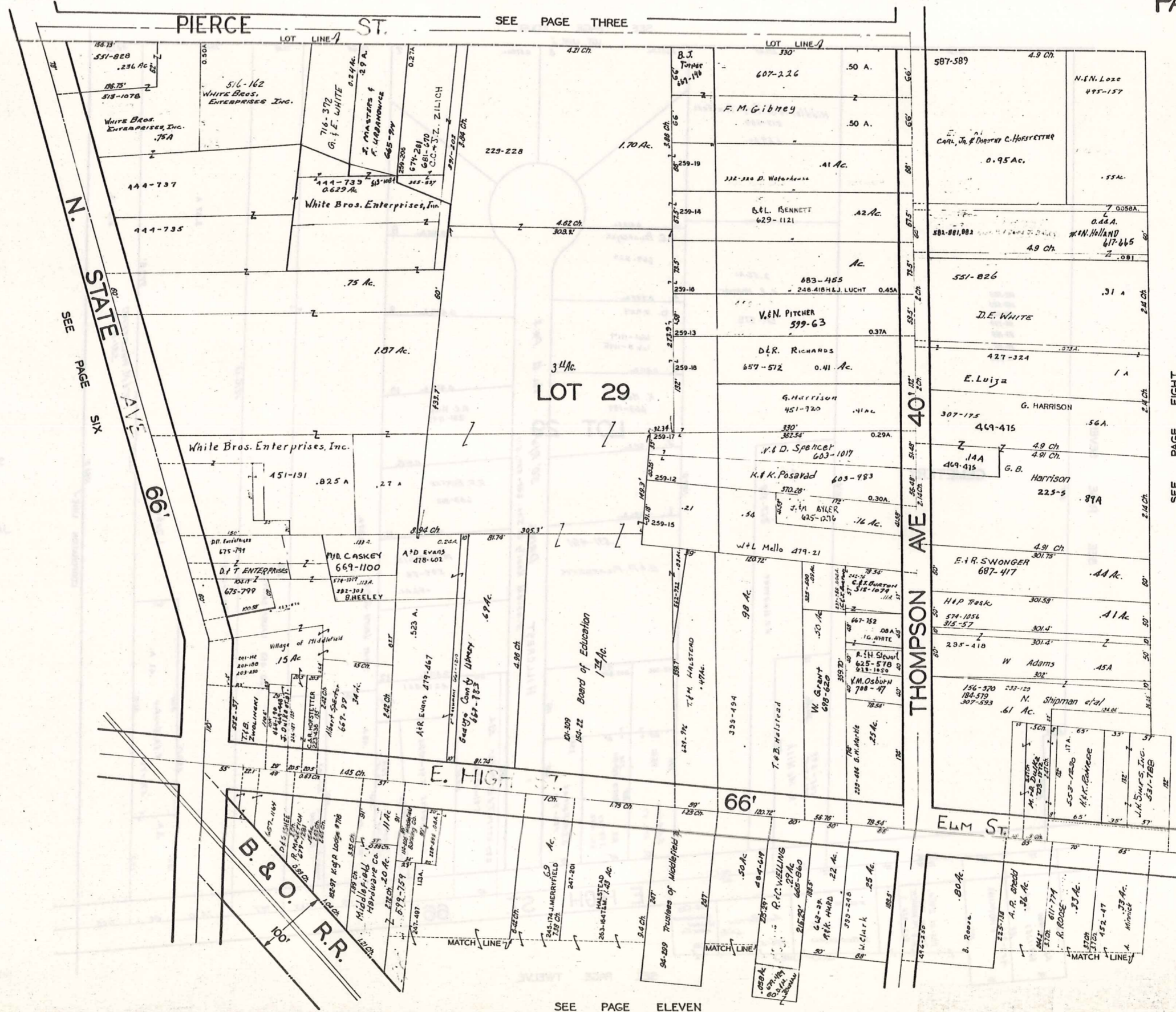
SEE PAGE FIVE

SEE PAGE SEVEN

SEE PAGE TEN

MIDDLEFIELD VILLAGE

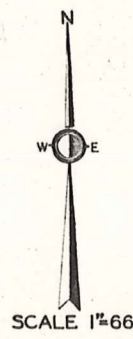
PAGE 8



SEE PAGE SIX

SEE PAGE THREE

SEE PAGE EIGHT

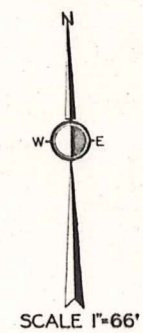
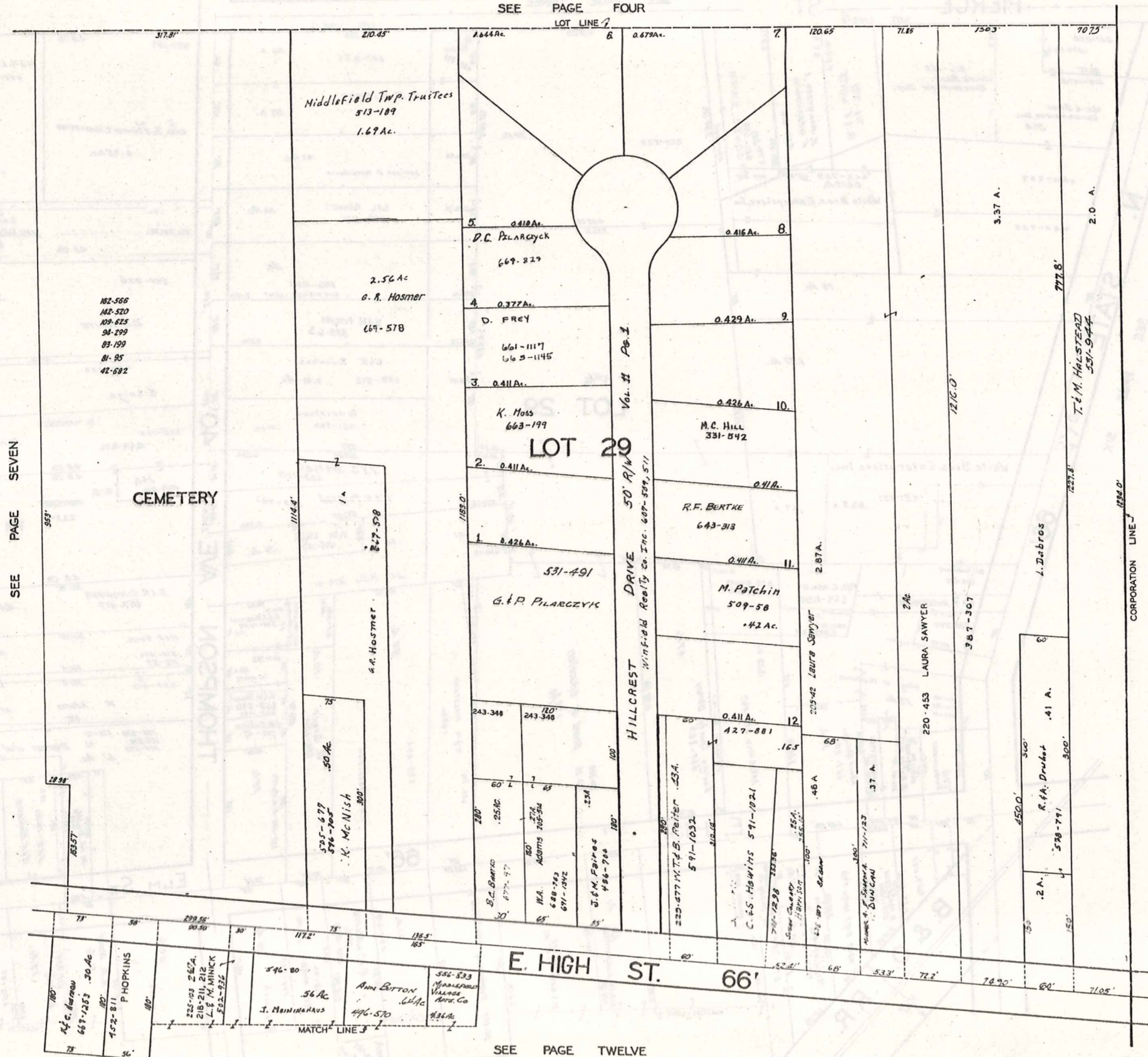


JAN 1, 1984

SEE PAGE ELEVEN

MIDDLEFIELD VILLAGE PG. 7

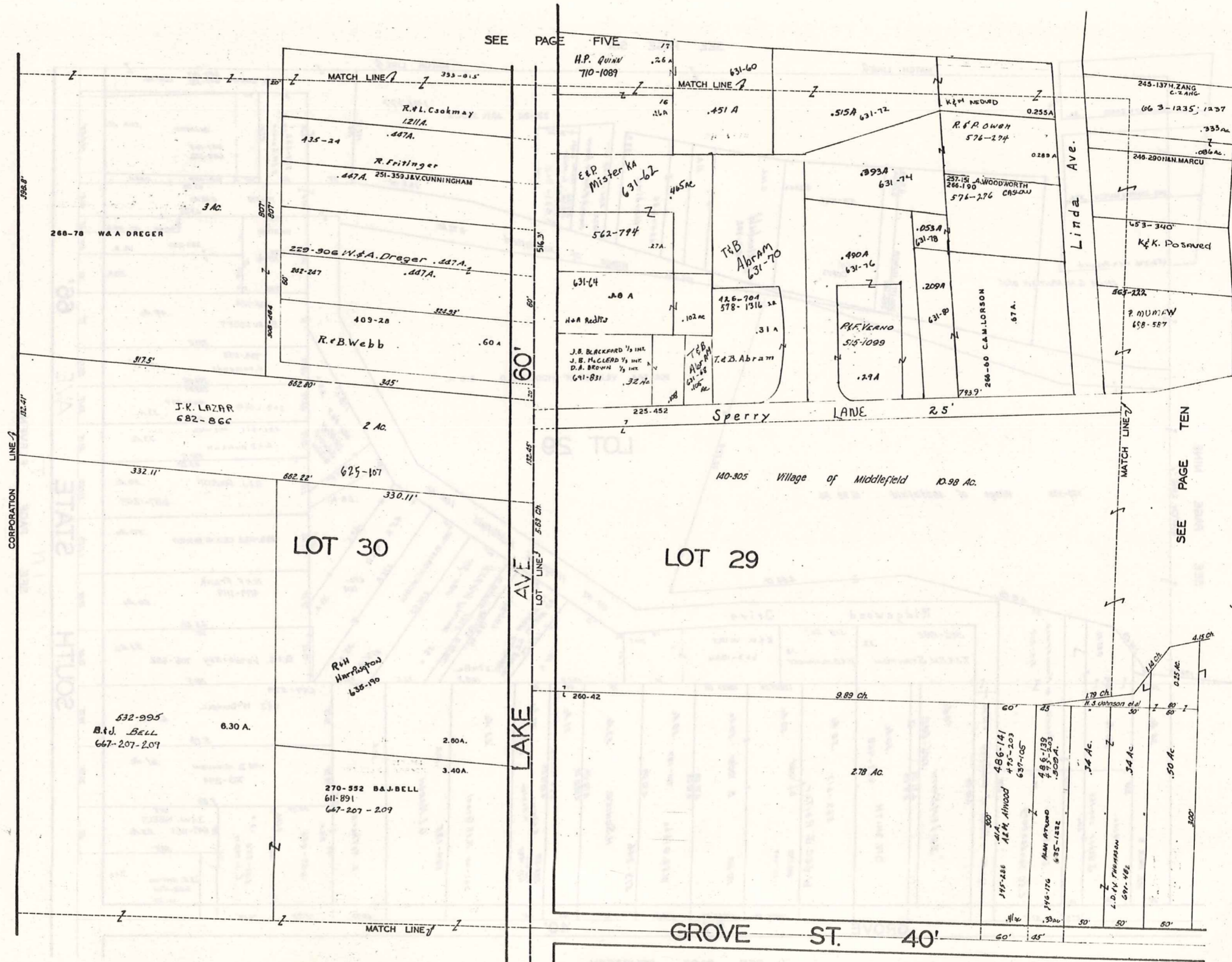
SEE PAGE FOUR



JAN .1, 1984

SEE PAGE TWELVE

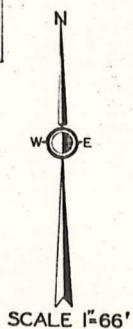
PAGE 10



SEE PAGE FIVE

SEE PAGE TEN

SEE PAGE THIRTEEN



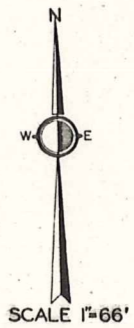
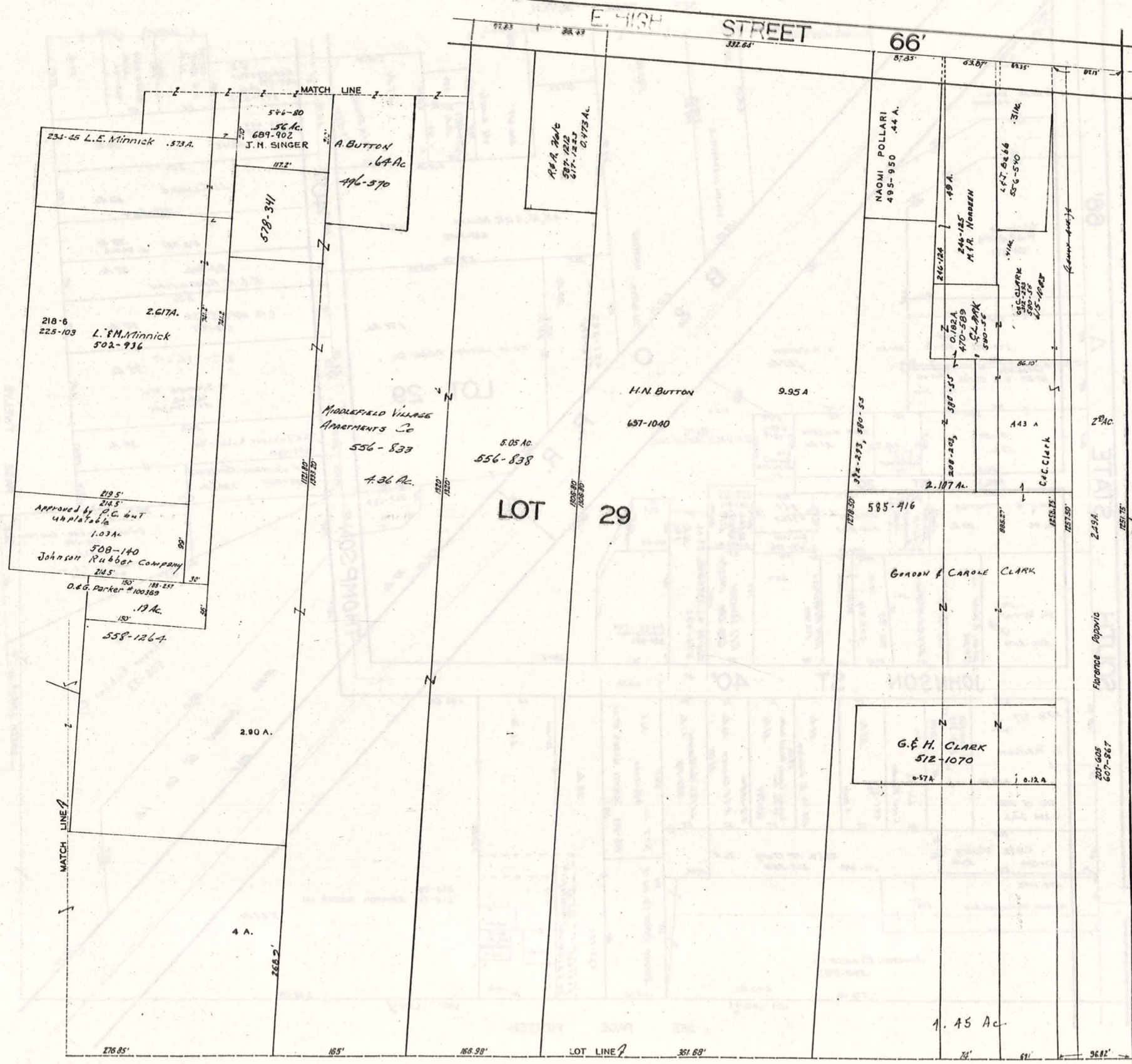
JAN . 1 , 1984

283

MIDDLEFIELD VILLAGE

SEE PAGE EIGHT

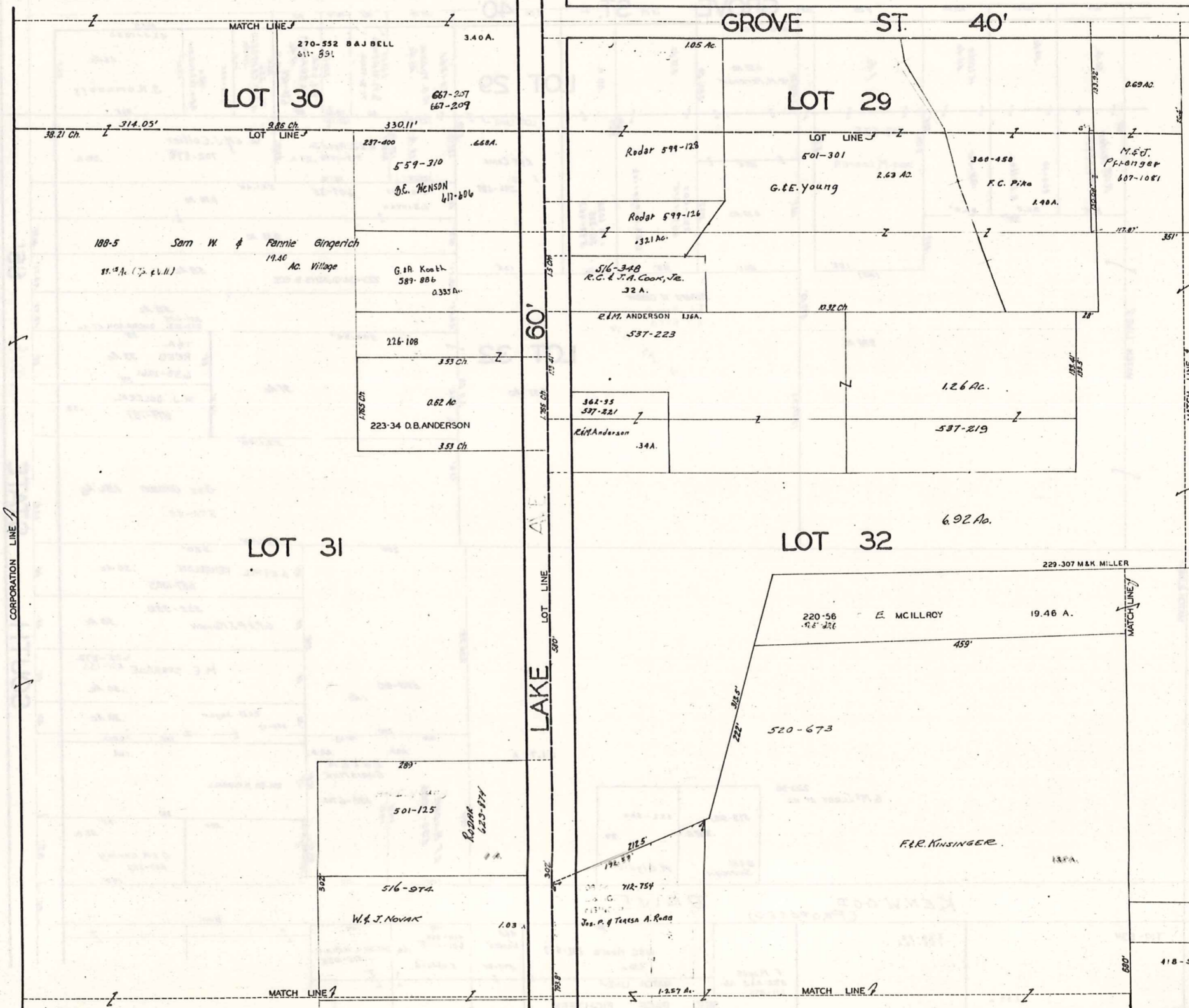
SEE PAGE ELEVEN



JAN. 1, 1984

SEE PAGE SIXTEEN

SEE PAGE NINE



SCALE 1"=66'

JAN 1, 1984

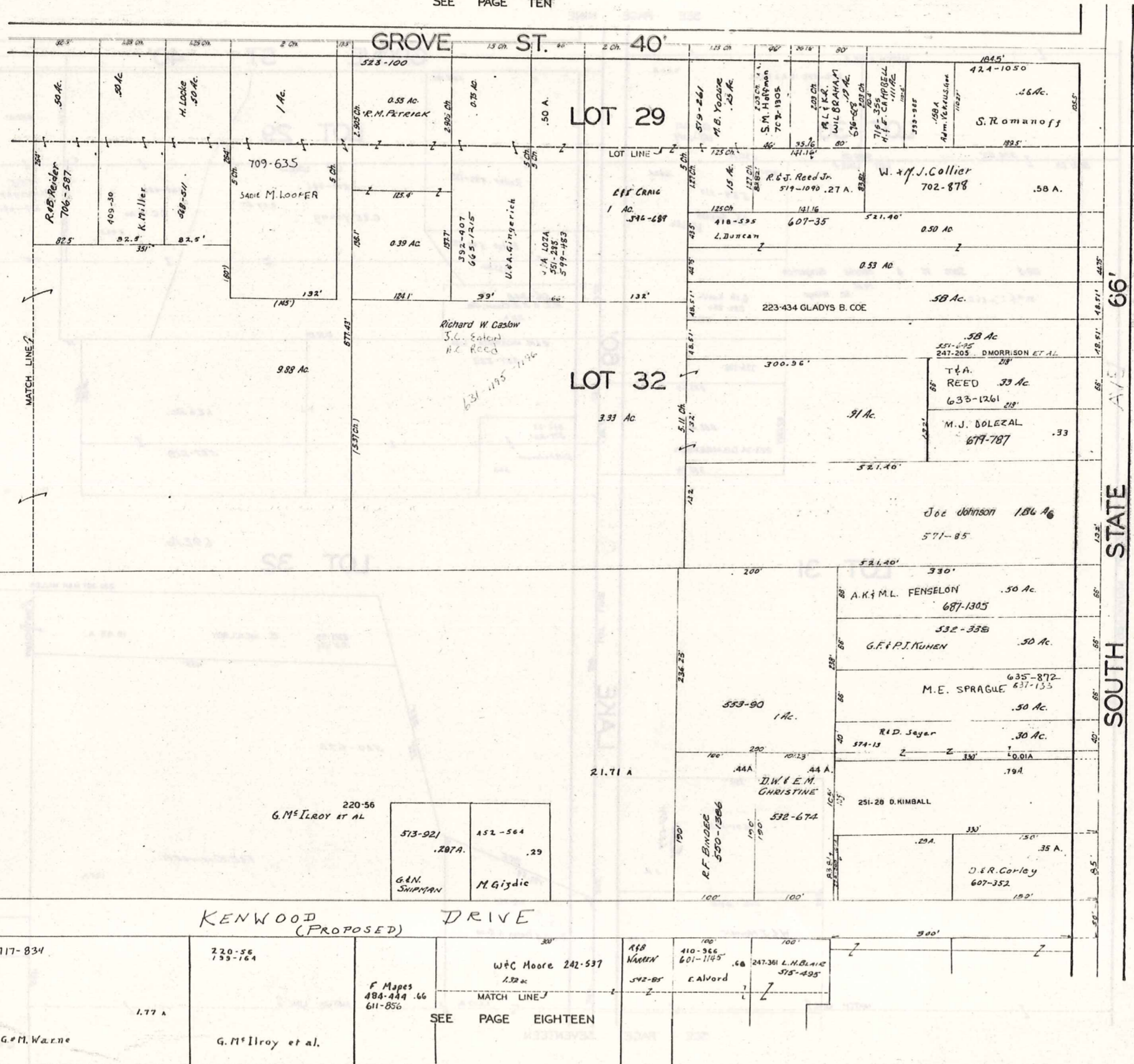
SEE PAGE FOURTEEN

SEE PAGE SEVENTEEN

287

MIDDLEFIELD VILLAGE

SEE PAGE TEN



PAGE THIRTEEN

SEE MATCH LINE

SEE PAGE FIFTEEN

STATE AVE SOUTH 66'

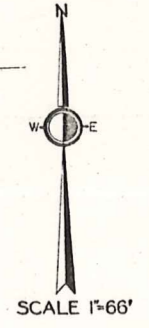
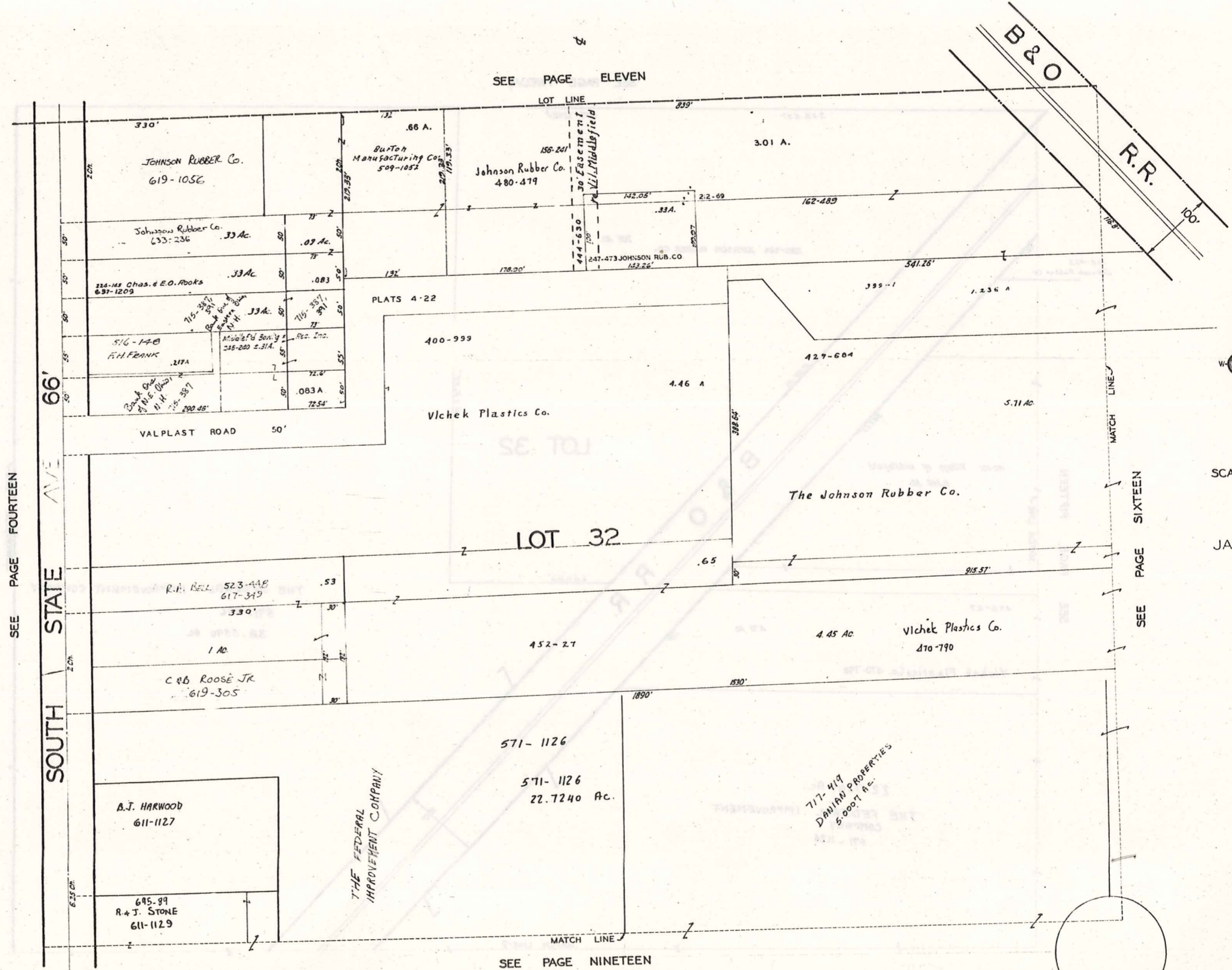


SCALE 1"=66'

JAN 1, 1984

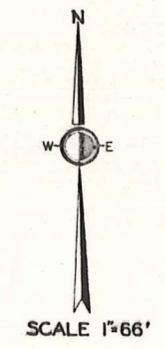
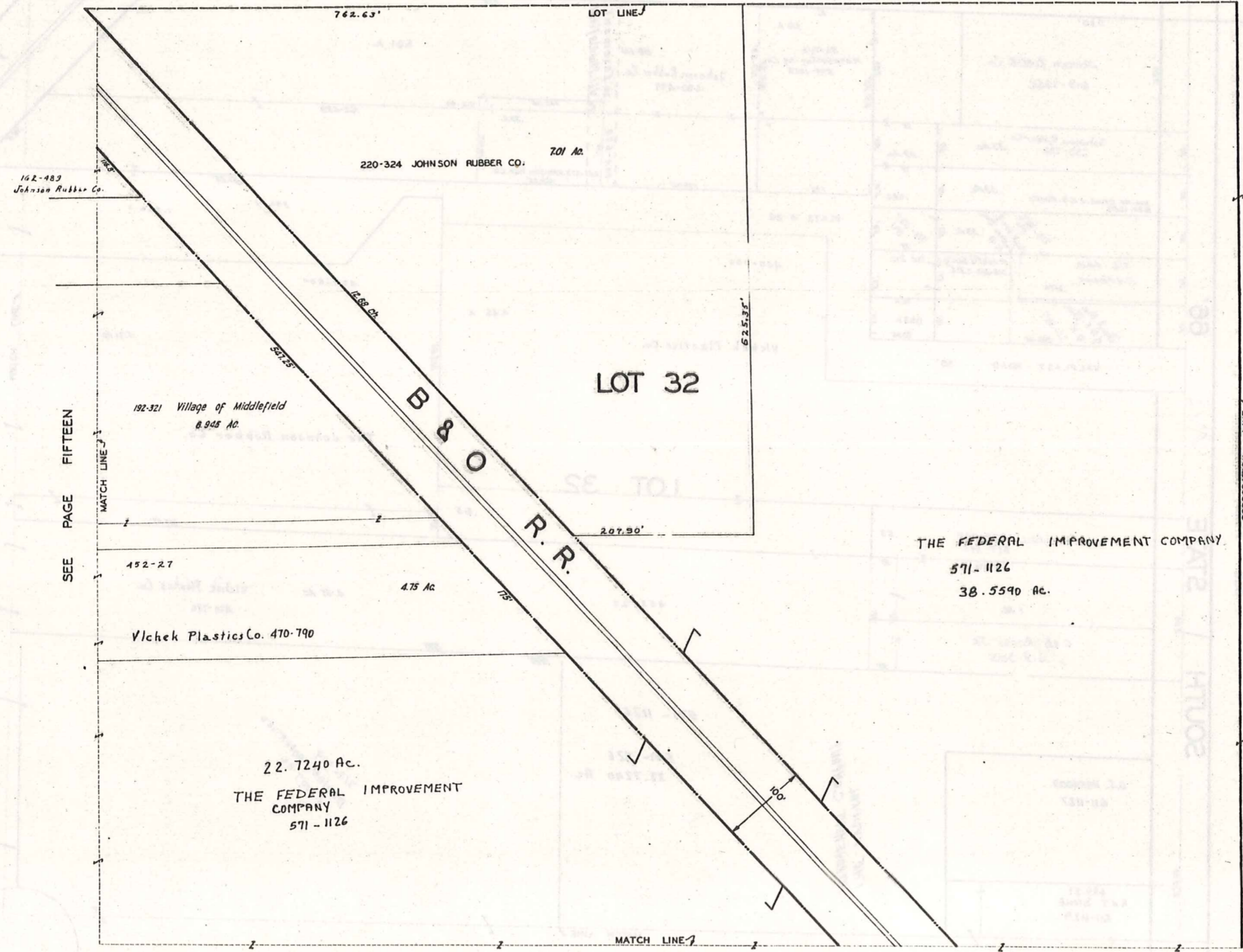
SEE PAGE EIGHTEEN

PAGE 14



JAN. 1, 1974

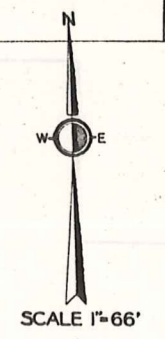
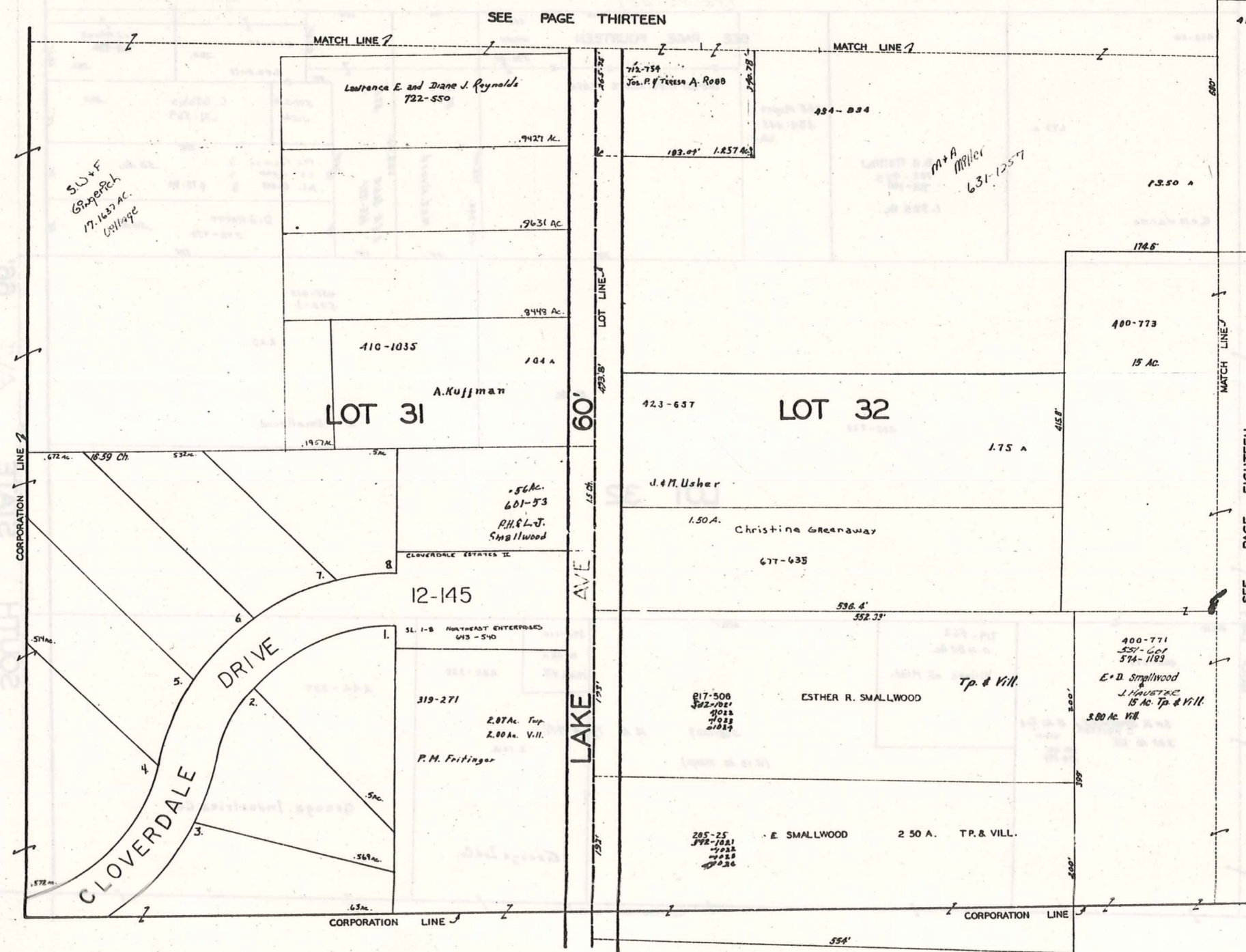
SEE PAGE TWELVE



JAN 1, 1984

SEE PAGE 21

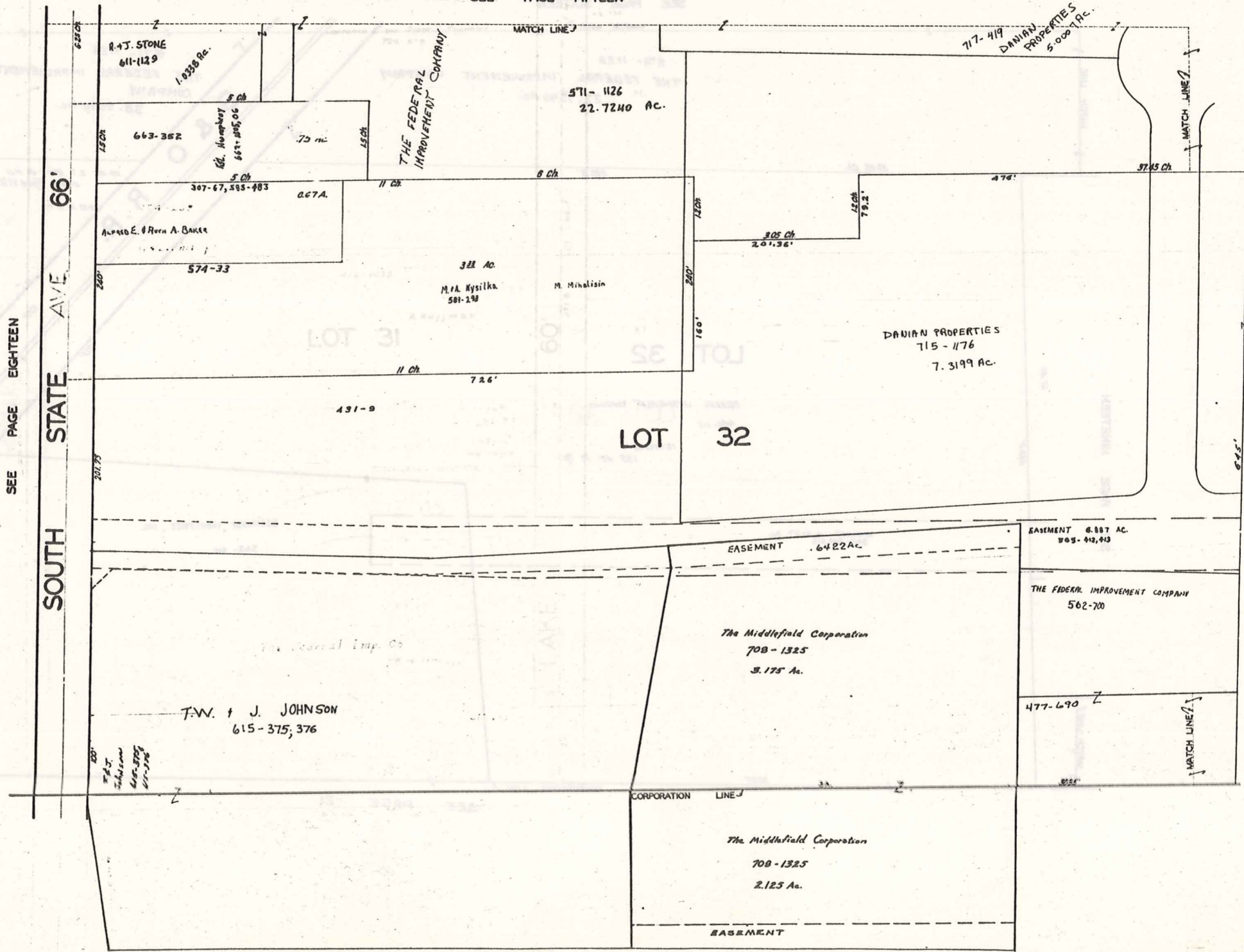
SEE PAGE TWENTY



JAN 11, 1984

PAGE 20

SEE PAGE FIFTEEN



SCALE 1"=66'

JAN . 1 , 1982

SEE PAGE EIGHTEEN

SEE PAGE TWENTY

SEE PAGE SIXTEEN

MATCH LINE

571-1126
THE FEDERAL IMPROVEMENT COMPANY
22.7240 Ac.

571-1126
THE FEDERAL IMPROVEMENT COMPANY
38.5590 Ac.

59-458 E.T. Steele Jr et al
51.30 Ac. Tp. 4 Vill
0.45 Ac. in Vill.

B & O R.R.

LOT 32

FEDERAL IMPROVEMENT COMPANY
486-112
13.9073 Ac.
165 Ac. in Tp.

EASEMENT 6.9887 Ac.
563-412, 413

NORMANDY INDUSTRIES, INC.
565-412

SEE PAGE NINETEEN

MATCH LINE

MATCH LINE

SEE PAGE 21

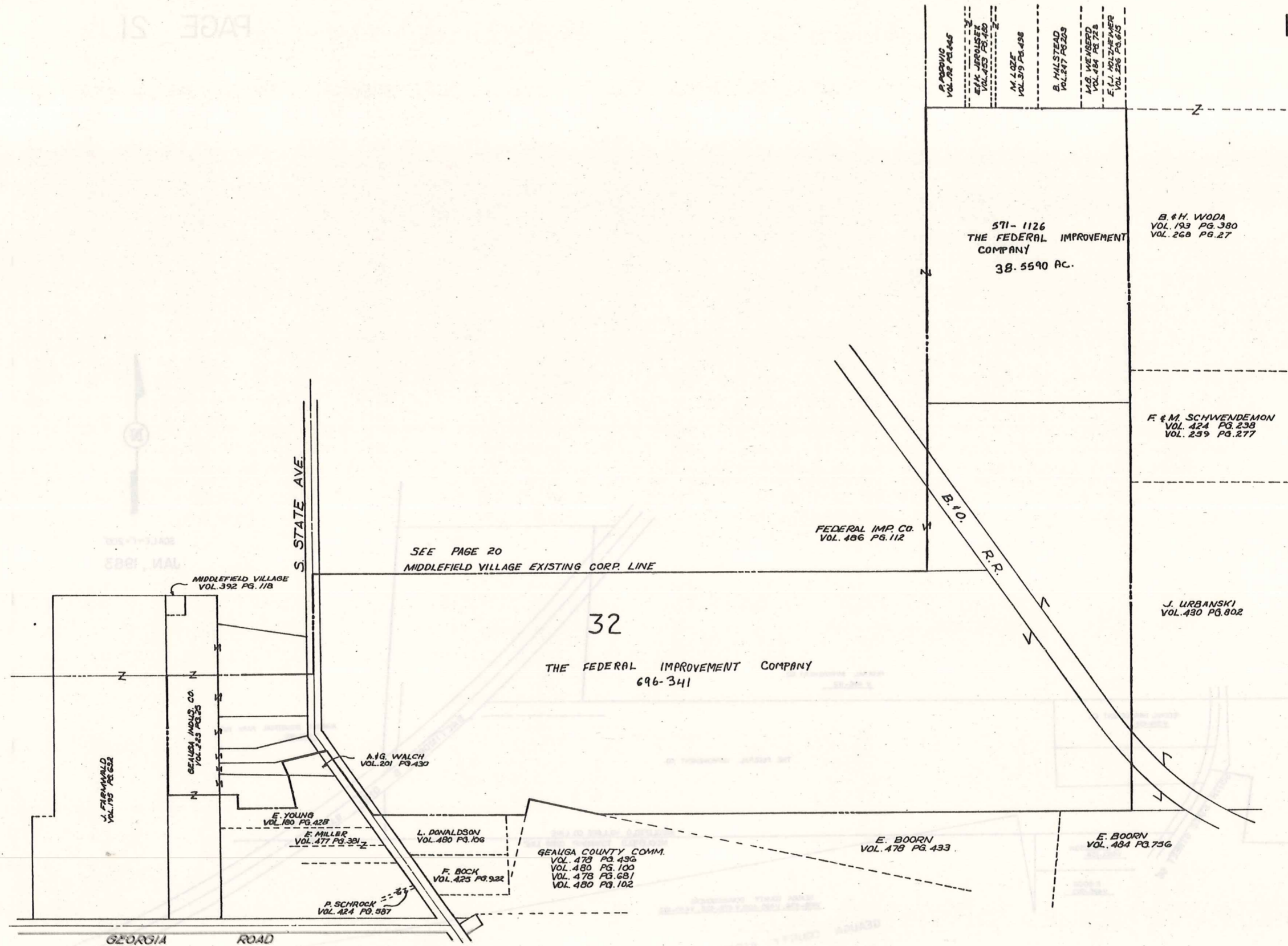
CORPORATION LINE

SEE PAGE 21



SCALE 1"=66'

JAN .1, 1984

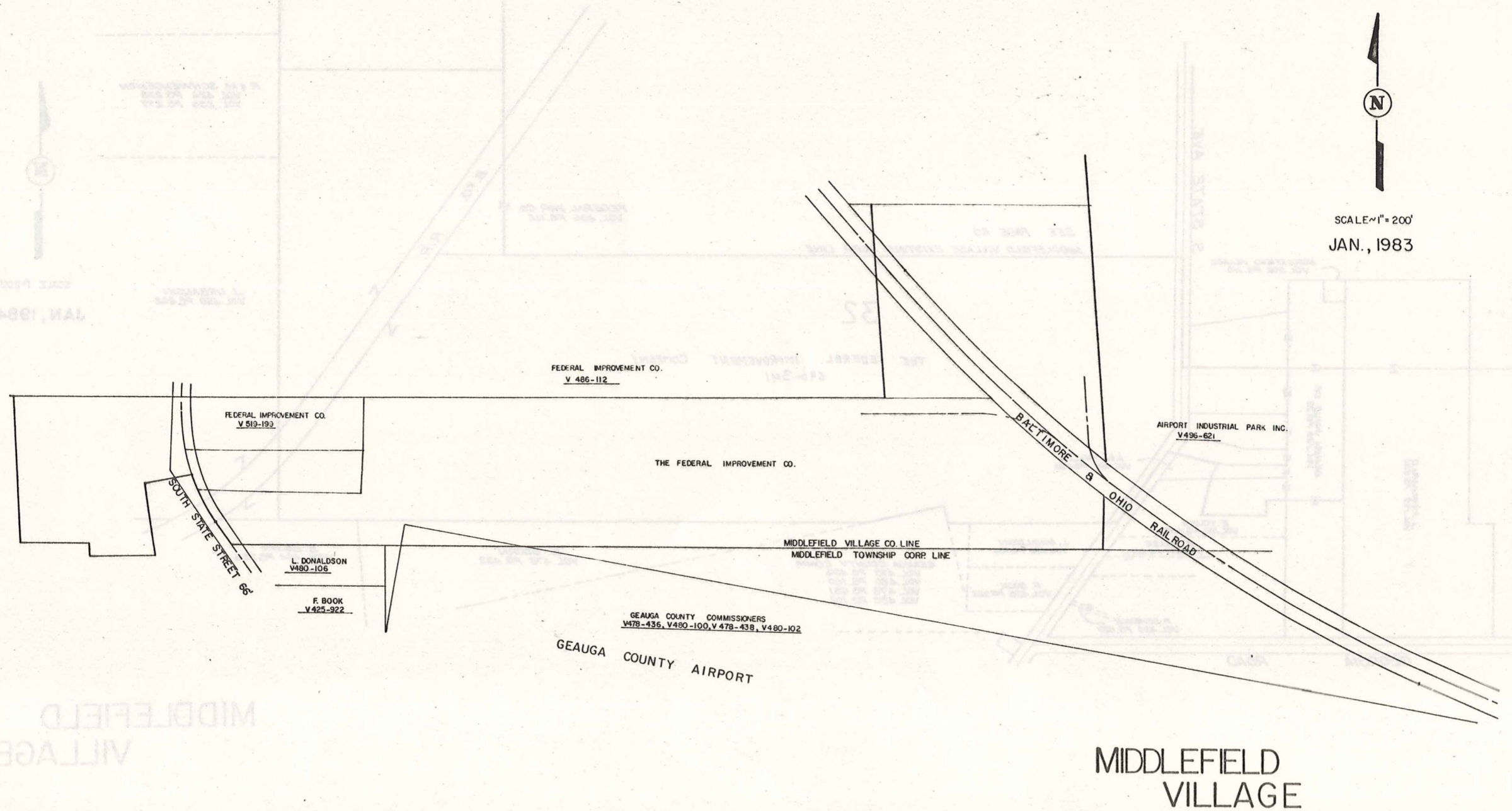


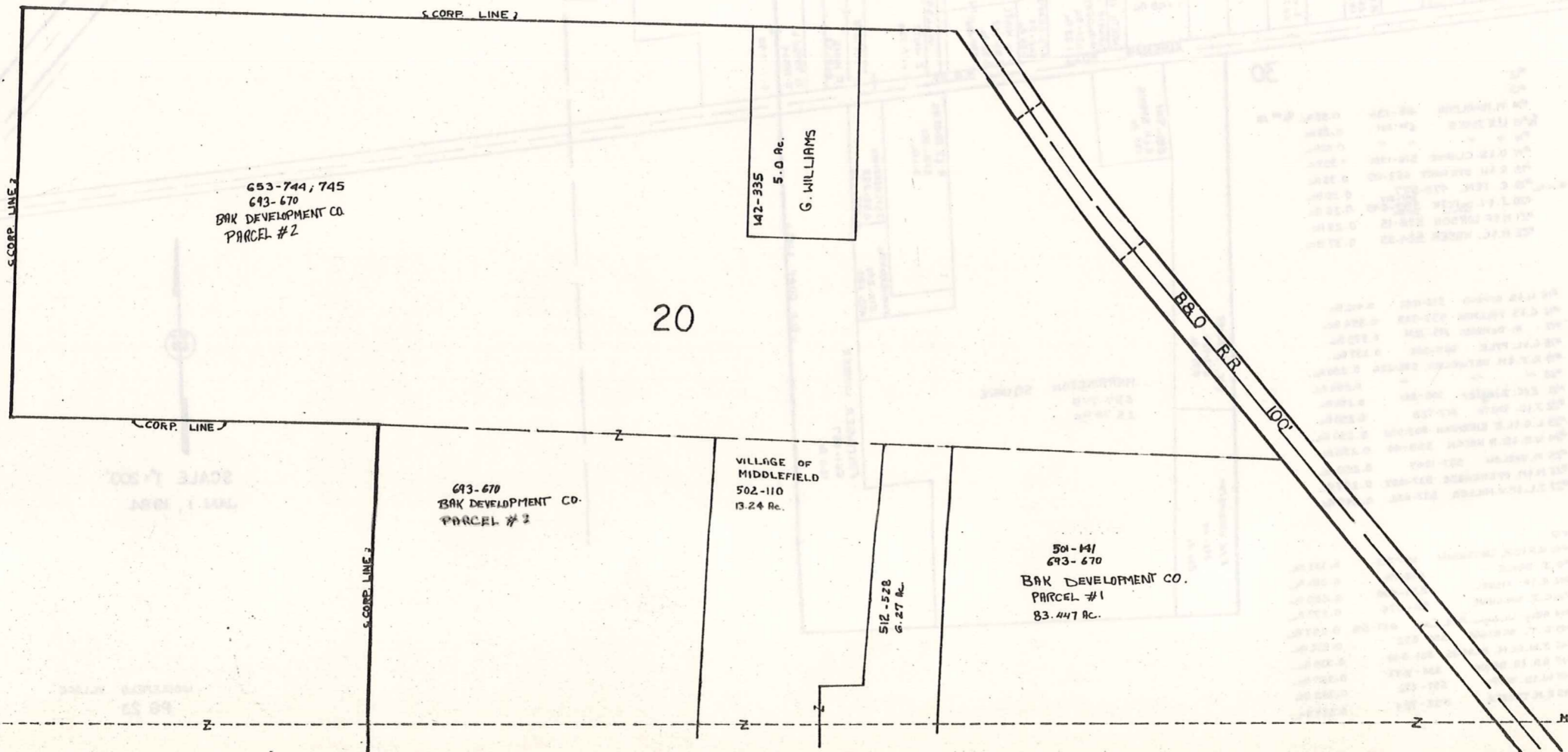
SCALE 1"=200'

JAN, 1984

MIDDLEFIELD VILLAGE

295





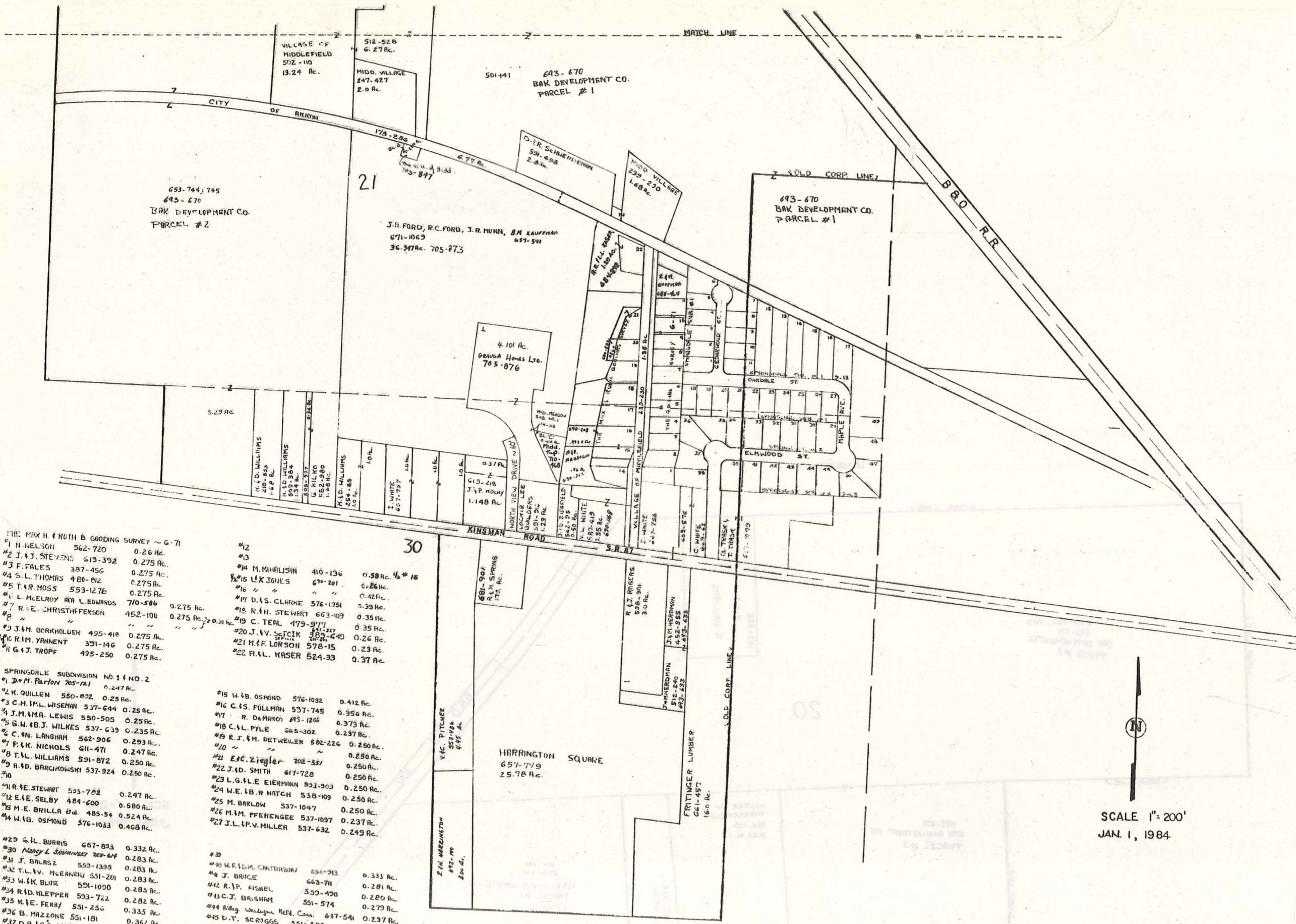
W. WALDEN



SCALE 1" = 200'
JAN, 1984

MIDDLEFIELD VILLAGE
PG. 22

297



THE MAX H & RUTH B GOODING SURVEY ~ G-71

#1 N. NELSON	562-720	0.26 Ac.
#2 J. & J. STEVENS	619-392	0.275 Ac.
#3 F. FALES	387-456	0.275 Ac.
#4 S. L. THOMAS	480-212	0.275 Ac.
#5 T. R. MOSS	553-1276	0.275 Ac.
#6 L. McELROY AND L. EDWARDS	710-586	0.275 Ac.
#7 R. E. CHRISTOFFERSON	452-100	0.275 Ac.
#8		
#9 J. M. BORKHUSEN	425-418	0.275 Ac.
#10 R. M. YANNETT	391-146	0.275 Ac.
#11 G. J. TROPF	495-250	0.275 Ac.

#12		
#13		
#14 M. MINALISIN	410-136	0.58 Ac. 1/2 #16
#15 L. K. JONES	670-201	0.26 Ac.
#16		
#17 D. S. CLARKE	576-1951	0.42 Ac.
#18 R. H. STEWART	663-109	0.39 Ac.
#19 C. TEAL	479-977	0.35 Ac.
#20 J. V. VETICK	389-643	0.26 Ac.
#21 M. F. LORSON	578-15	0.23 Ac.
#22 R. L. KASER	524-33	0.37 Ac.

SPRINGDALE SUBDIVISION NO. 1 & NO. 2

#1 J. H. Parlon	705-121	0.247 Ac.
#2 K. GUILLEN	580-822	0.25 Ac.
#3 C. H. McL. WISEMAN	537-644	0.25 Ac.
#4 J. M. M. R. LEWIS	550-505	0.25 Ac.
#5 G. W. & B. J. WILKES	537-639	0.235 Ac.
#6 C. W. LANGHAM	562-906	0.293 Ac.
#7 F. K. NICHOLS	611-471	0.247 Ac.
#8 T. L. WILLIAMS	591-872	0.250 Ac.
#9 H. D. BARCOWSKI	537-924	0.250 Ac.
#10		
#11 R. E. STEWART	593-782	0.247 Ac.
#12 E. E. SELBY	484-600	0.580 Ac.
#13 M. E. BRILLA	485-54	0.524 Ac.
#14 W. B. OSMOND	576-1033	0.468 Ac.

#15 W. B. OSMOND	576-1032	0.412 Ac.
#16 C. S. FULLMAN	537-745	0.356 Ac.
#17 R. DeMARCO	493-1206	0.373 Ac.
#18 C. V. PYLE	665-302	0.237 Ac.
#19 R. J. & M. DETWEILER	582-226	0.250 Ac.
#20		
#21 E. C. Ziegler	702-557	0.250 Ac.
#22 J. D. SMITH	617-728	0.250 Ac.
#23 L. G. ALE EIERMANN	593-903	0.250 Ac.
#24 W. E. & B. R. HATCH	538-109	0.250 Ac.
#25 M. BARLOW	537-1047	0.250 Ac.
#26 M. M. PFERENGER	537-1097	0.237 Ac.
#27 J. L. & V. MILLER	537-632	0.249 Ac.

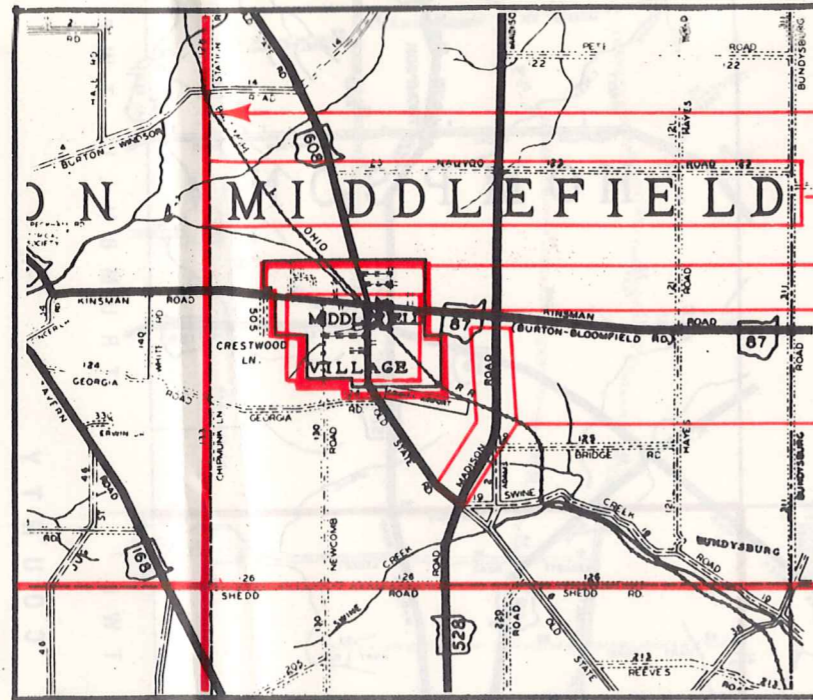
#29 G. H. BARRIS	657-893	0.332 Ac.
#30 Nancy L. SWANSON	787-649	0.283 Ac.
#31 J. BARLIZ	550-1395	0.283 Ac.
#32 T. L. & V. McEARNEN	531-201	0.283 Ac.
#33 W. H. BLUE	501-1090	0.283 Ac.
#34 R. D. KLEPPER	593-722	0.282 Ac.
#35 W. E. FERRY	551-256	0.335 Ac.
#36 B. MAZZONE	551-181	0.362 Ac.
#37 D. A. & C. A. WATSON	553-298	0.333 Ac.
#38 R. S. PETRICK	661-337	0.333 Ac.

#39		
#40 W. F. & M. CANTERBURY	594-913	0.333 Ac.
#41 J. BRUCE	663-771	0.281 Ac.
#42 R. P. FISHEL	550-490	0.280 Ac.
#43 C. J. BRIGHAM	551-574	0.279 Ac.
#44 Reg. Washington Natl. Com.	617-541	0.237 Ac.
#45 D. T. SCRIGGS	551-572	0.332 Ac.
#46 J. W. & K. M. BLASINS	551-540	0.350 Ac.
#47 R. A. & A. BRAUN	556-1077	0.357 Ac.
#48 W. D. HUFF	657-232	0.335 Ac.
#49 E. M. TROYER	552-724	0.332 Ac.

SCALE 1" = 200'
 JAN 1, 1984

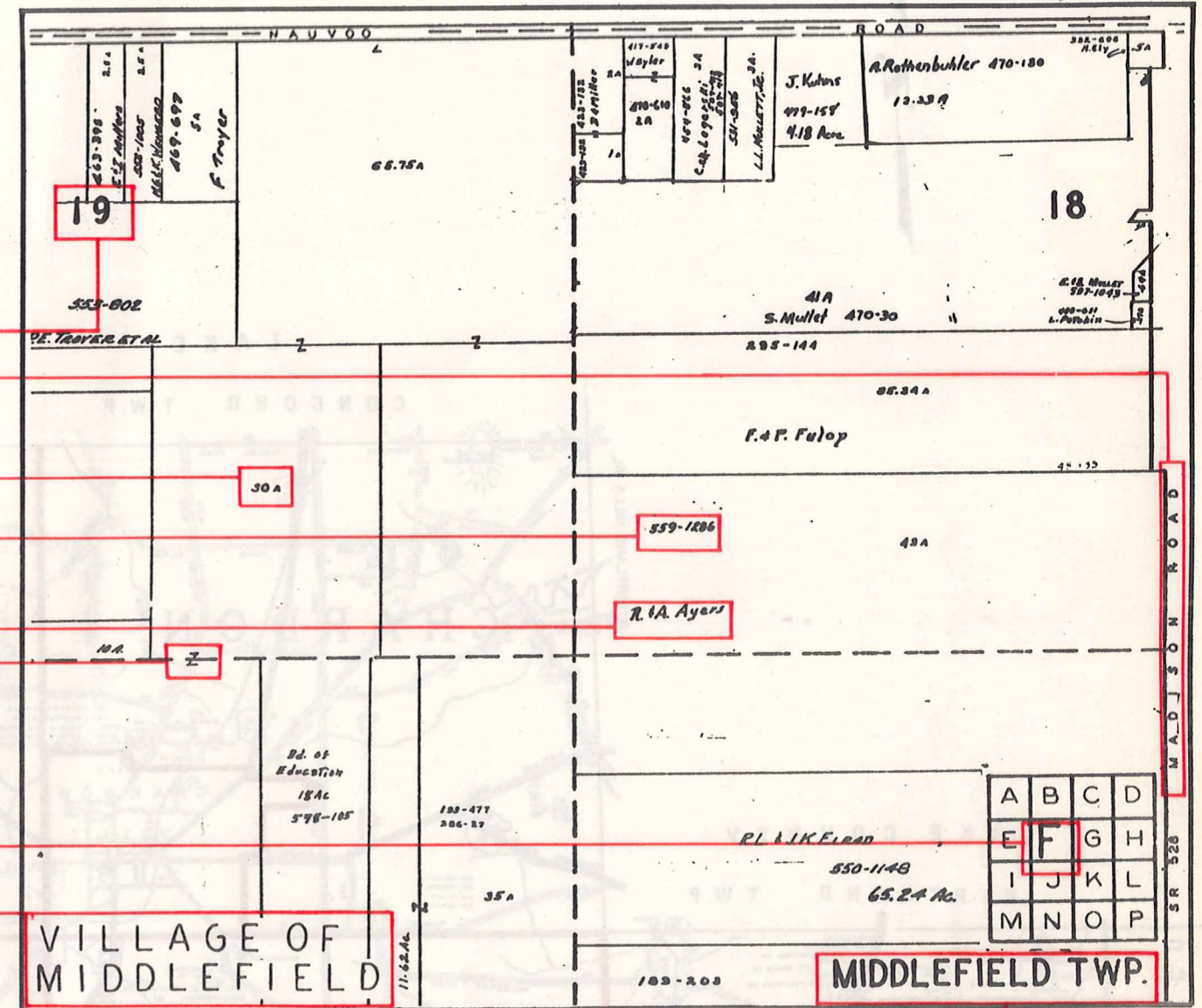
Explanation and Use Sheet for Geauga County, Ohio

SAMPLE (PARTIAL) COUNTY INDEX MAP



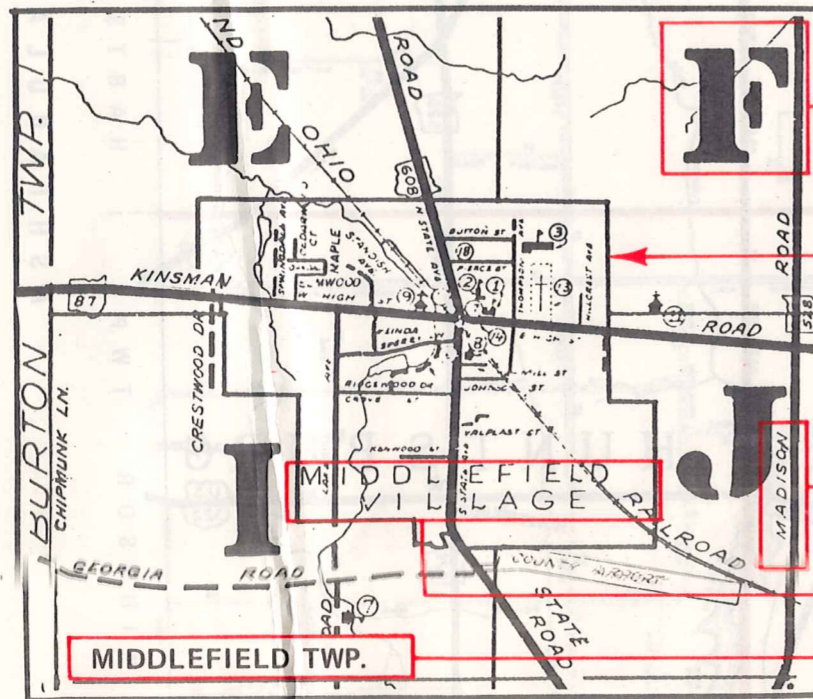
- Township Boundary
- Township Name
- Village Boundary
- Village Name
- Tract Lot Number
- Street Name
- Acreage
- Deed Book & Page
- Owners Name
- Denotes Continous Ownership

SAMPLE (PARTIAL) MAP PAGE



- Map Page Number
- Village Name
- Village Boundary
- Township Name

SAMPLE (PARTIAL) MUNICIPALITY INDEX MAP



- Street Name
- Village Name
- Township Name

USE OF THE MAP VOLUME

1. LOCATE THE GENERAL AREA OF INTEREST ON THE COUNTY INDEX MAP, ATLAS PAGE 'B', AND NOTE THE MUNICIPALITY NAME (TOWNSHIP OR VILLAGE).
2. REFER TO THE TABLE OF CONTENTS, ATLAS PAGE 'C', AND NOTE THE BEGINNING ATLAS PAGE NUMBER FOR THE MUNICIPALITY OF INTEREST.
3. TURN TO THE PAGE INDICATED. ON THIS PAGE WILL APPEAR AN INDEX MAP FOR THAT MUNICIPALITY.
4. LOCATE THE GENERAL AREA OF INTEREST AND NOTE THE MAP PAGE NUMBER. THIS MAY BE EITHER A LETTER OR A NUMBER.
5. MAP PAGES ARE IN ALPHABETICAL (OR NUMERICAL) SEQUENCE FOLLOWING THE MUNICIPALITY INDEX MAP. FOLLOW SEQUENCE TO THE MAP PAGE INDICATED.
6. LOCATE SPECIFIC PARCEL OF INTEREST AND NOTE THE DESIRED INFORMATION.

NOTE: ON SOME MAPS YOU MAY BE REFERRED TO A DETAIL SHEET SHOWING AN ENLARGEMENT OF THE AREA. THESE MAPS ARE FOUND AT THE END OF THE REGULAR MAP PAGES IN EACH MUNICIPALITY IN EITHER ALPHABETICAL OR NUMERICAL SEQUENCE.

NOTE: CHARDON VILLAGE HAS TITLE SHEETS. TO LOCATE OWNERS NAME, NOTE THE PARCEL NUMBER, REFER TO THE TITLE PAGE FOLLOWING THE MAP OF INTEREST, FOLLOW NUMERICAL SEQUENCE TO THE PARCEL NUMBER OF INTEREST AND NOTE THE DESIRED INFORMATION. IN ALL OTHER MUNICIPALITIES THE OWNERS NAME APPEARS ON THE MAP PAGE.

This book is the property of REAL ESTATE DATA, INC. and is distributed by REDI under a leasing arrangement requiring return to REDI upon termination of the lease. REDI reserves the right to reclaim this book if found in the possession of any firm or person where possession was obtained through any unauthorized source.